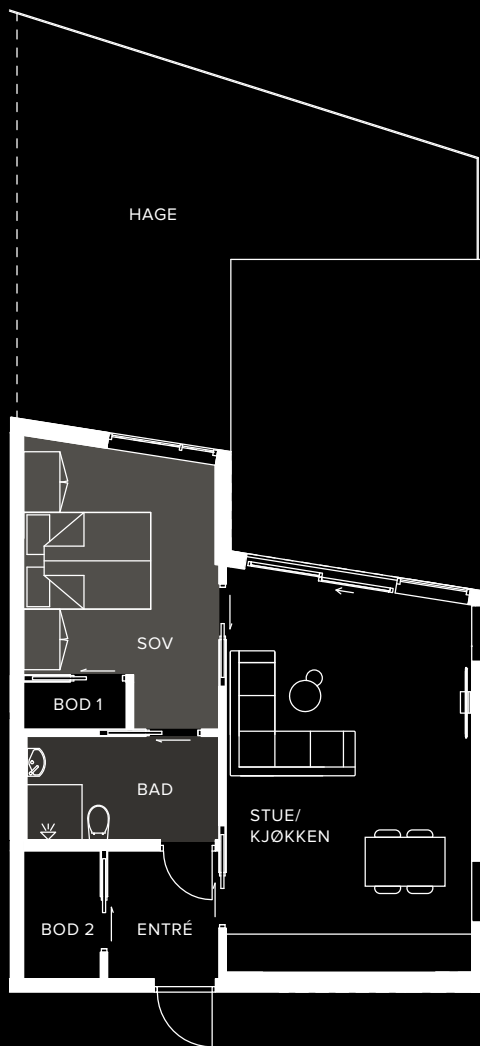


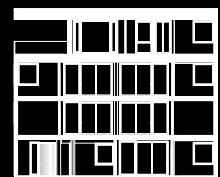


A1. 55 m²



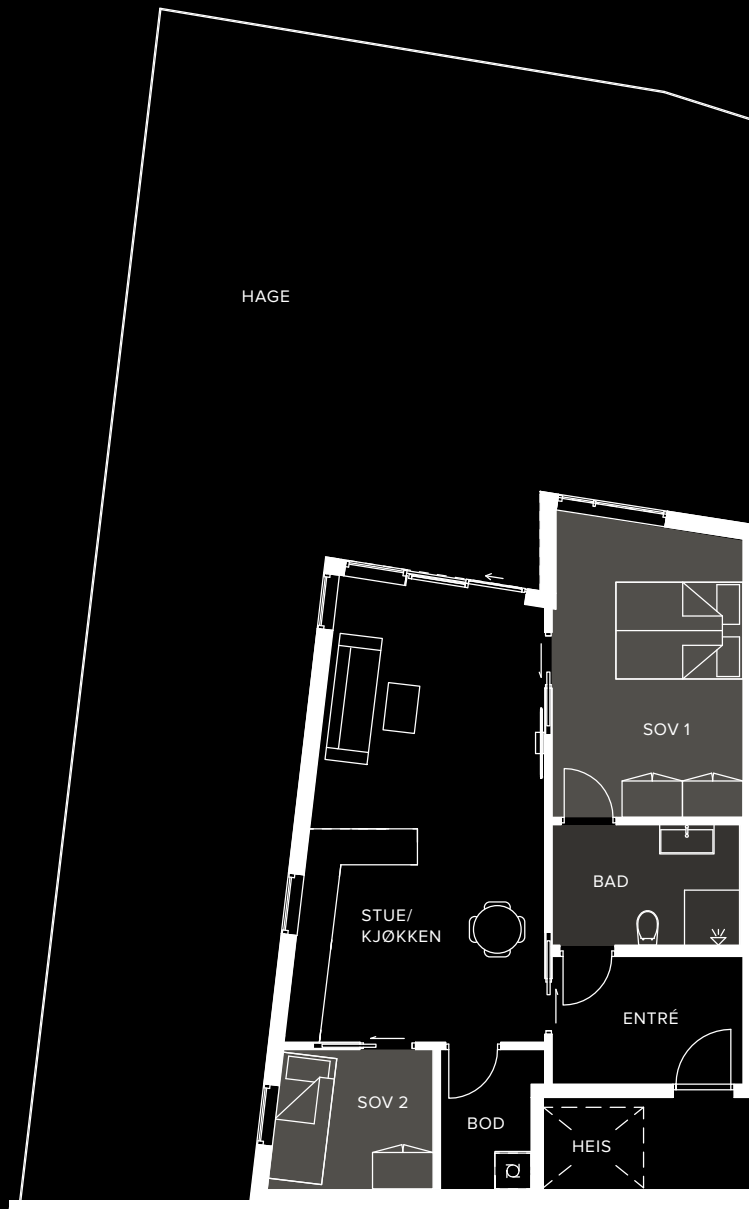
Stue/kjøk.: 25,9 m²
Sov: 13,1 m²
Bad: 5,4 m²
Entré: 3,9 m²

Bod 1: 1,3 m²
Bod 2: 2,7 m²
Hage: 53,9 m²



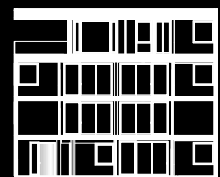


A2. 69 m²



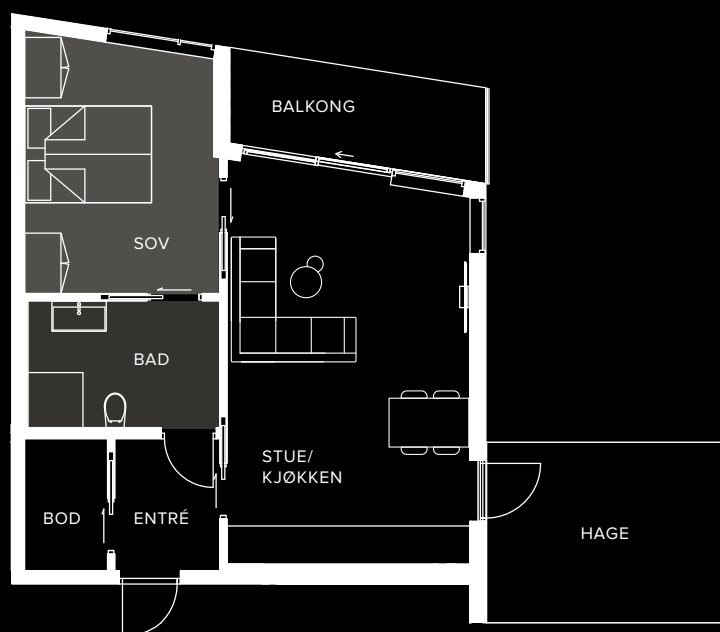
Stue/kjøk.: 28,8 m²
Sov 1: 15,2 m²
Sov 2: 6 m²
Bad: 6,2 m²

Entré: 6,7 m²
Bod: 3,6 m²
Hage: 123,6 m²



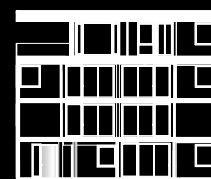


A3. 55 m²



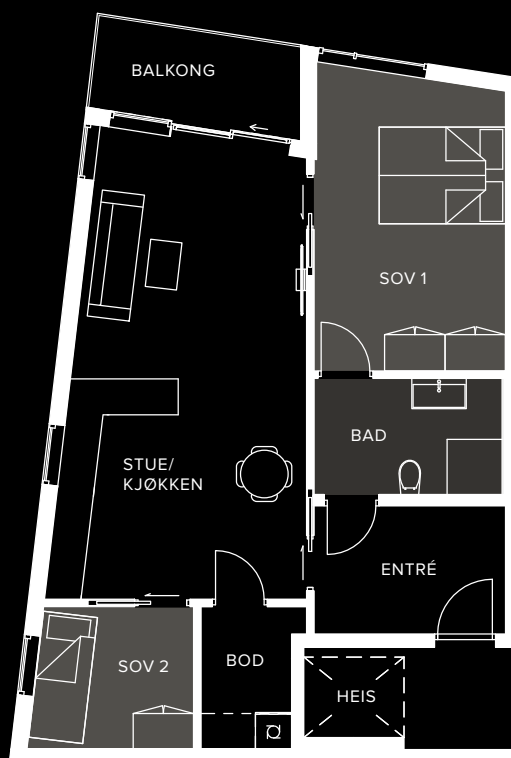
Stue/kjøk.: 25,7 m²
Sov: 13,2 m²
Bad: 6,6 m²
Entré: 3,8 m²

Bod: 3 m²
Balkong: 6,9 m²
Hage: 12 m²



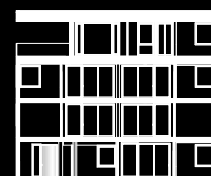


A4. 70 m²



Stue/kjøk.: 29,5 m²
Sov 1: 15,4 m²
Sov 2: 6,2 m²
Bad: 6 m²

Entré: 6,7 m²
Bod: 3,6 m²
Balkong: 5,5 m²



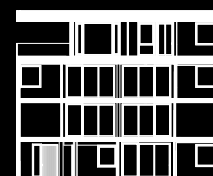


A5. 127 m²



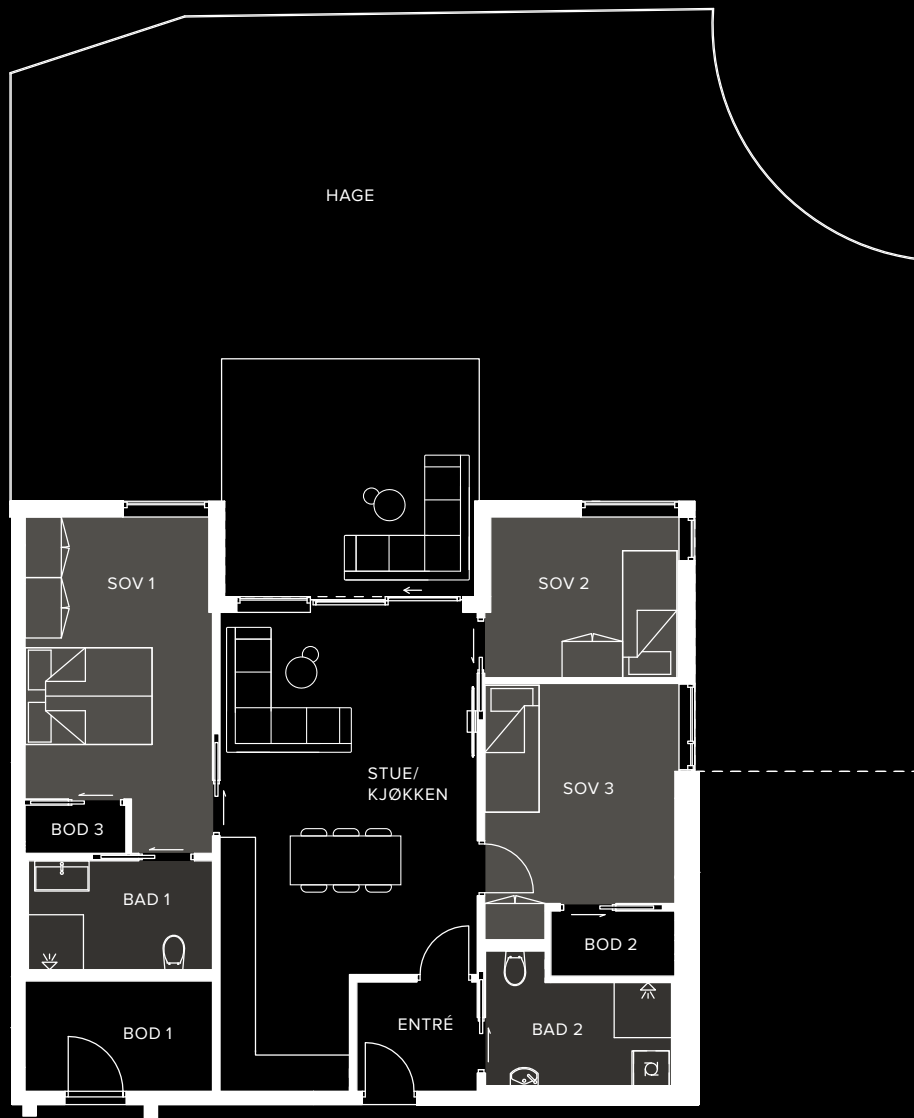
Stue/kjøk.: 46,3 m²
Sov 1: 16,1 m²
Sov 2: 10,7 m²
Sov 3: 7,3 m²
Sov 4: 8 m²

Bad 1: 5 m²
Bad 2: 5,4 m²
Bod: 3,7 m²
Entré/gang: 18,4 m²
Balkong: 12,7 m²

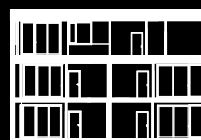




Bl. 89 m²

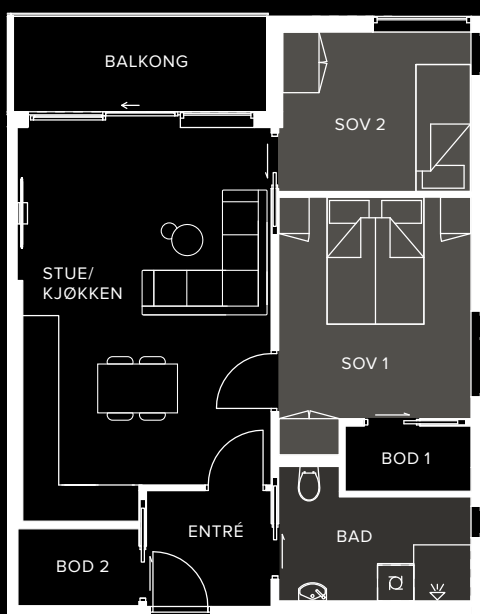


Stue/kjøk.:	29,6 m ²	Entré:	3,6 m ²
Sov 1:	15,6 m ²	Bod 1:	5,7 m ²
Sov 2:	8,4 m ²	Bod 2:	2,2 m ²
Sov 3:	12,1 m ²	Bod 3:	1,3 m ²
Bad 1:	5,5 m ²	Hage:	132,4 m ²
Bad 2:	6 m ²		





B2. 64 m²



Stue/kjøk.: 25,7 m²

Sov 1: 12,2 m²

Sov 2: 8,3 m²

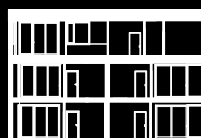
Bad: 6 m²

Entré: 4 m²

Bod 1: 2,2 m²

Bod 2: 2,5 m²

Balkong: 6,6 m²



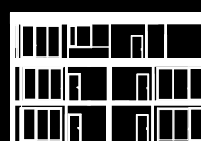


B3. 65 m²



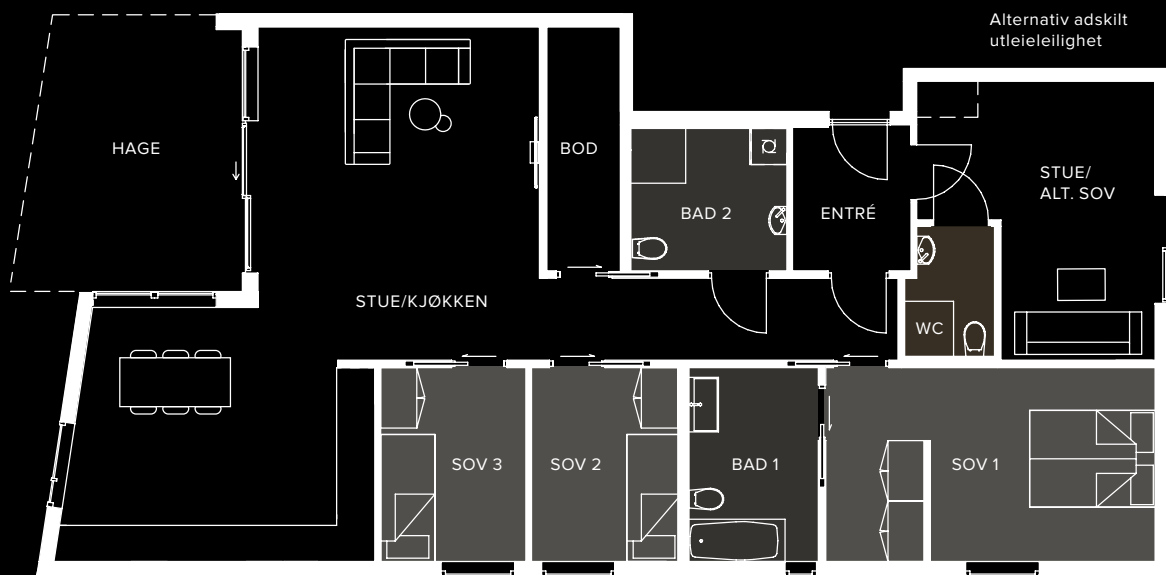
Stue/kjøk.: 25,9 m²
Sov 1: 12,2 m²
Sov 2: 8,3 m²
Bad: 5,8 m²
Entré: 3,9 m²

Bod 1: 2,2 m²
Bod 2: 2,6 m²
Balkong: 6,6 m²
Hage: 12 m²

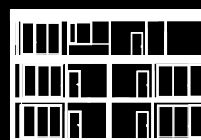




B4. 132 m²

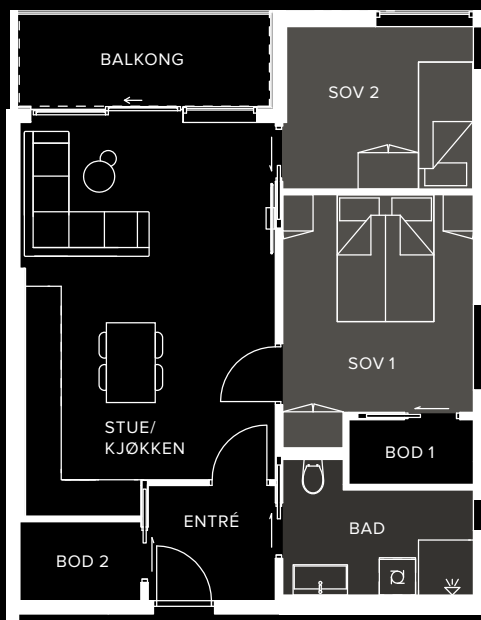


Stue/kjøk.:	52,8 m ²	Bad 2:	6,1 m ²
Sov 1:	17,3 m ²	Entré:	4,7 m ²
Sov 2:	7,7 m ²	WC:	3 m ²
Sov 3:	7,7 m ²	Bod:	4,9 m ²
Stue/Alt. Sov:	14,9 m ²	Hage:	16 m ²
Bad 1:	6,9 m ²		



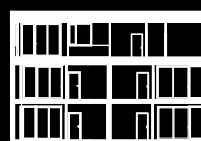


B5. 64 m²



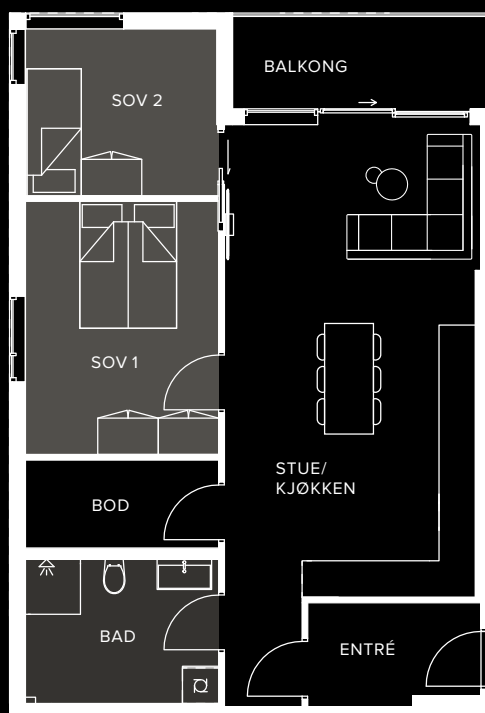
Stue/kjøk.: 25,8 m²
Sov 1: 11,9 m²
Sov 2: 8,4 m²
Bad: 6 m²

Entré: 4 m²
Bod 1: 2,2 m²
Bod 2: 2,6 m²
Balkong: 6,6 m²



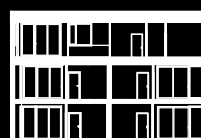


B6. 77 m²



Stue/kjøk.: 35 m²
Sov 1: 13,4 m²
Sov 2: 8,8 m²
Bad: 7,6 m²

Entré: 4,7 m²
Bod: 4,6 m²
Balkong: 6,6 m²

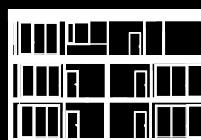




B7. 131 m²

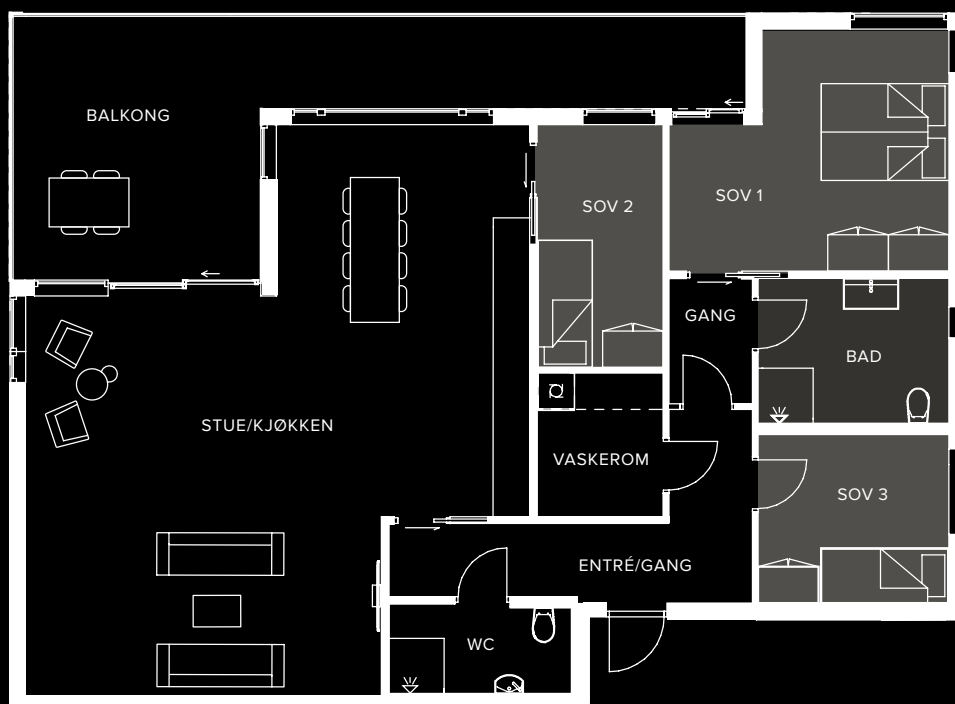


Stue/kjøk.:	52 m ²	Bad 2:	6,1 m ²
Sov 1:	17,3 m ²	Entré:	4,6 m ²
Sov 2:	7,7 m ²	WC:	3 m ²
Sov 3:	7,7 m ²	Bod:	4,8 m ²
Stue/Alt. Sov:	14,9 m ²	Balkong 1:	12,1 m ²
Bad 1:	6,8 m ²	Balkong 2:	2 m ²



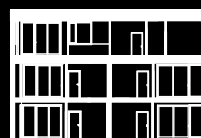


B8. 128 m²



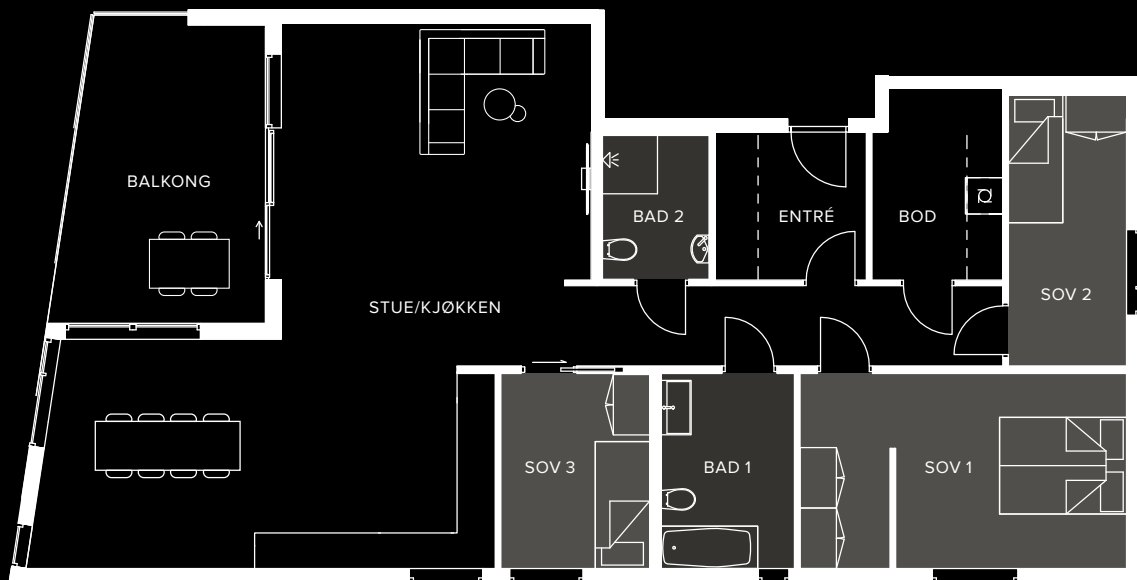
Stue/kjøk.: 59,7 m²
Sov 1: 16,1 m²
Sov 2: 8,5 m²
Sov 3: 8,8 m²
Bad: 7,5 m²

Vaskerom: 5 m²
Entré/Gang: 13,1 m²
WC: 4,4 m²
Balkong: 30,1 m²



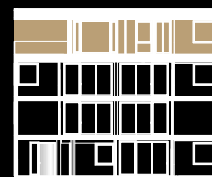
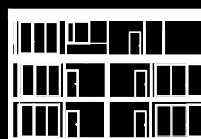


B9.1 128 m²



Stue/kjøk.: 64,8 m²
Sov 1: 17,2 m²
Sov 2: 9 m²
Sov 3: 7,9 m²
Bad 1: 7,1 m²

Bad 2: 4,2 m²
Entré: 6,1 m²
Bod: 6,7 m²
Balkong: 16,3 m²





B9.2 113 m²

Alternativ til B9.1



Stue/kjøk.: 58,4 m²
Sov 1: 17,1 m²
Sov 2: 8,9 m²
Bad 1: 7,1 m²

Bad 2: 4,2 m²
Bod/vask: 6,6 m²
Entré: 6,1 m²
Balkong: 33,2 m²

